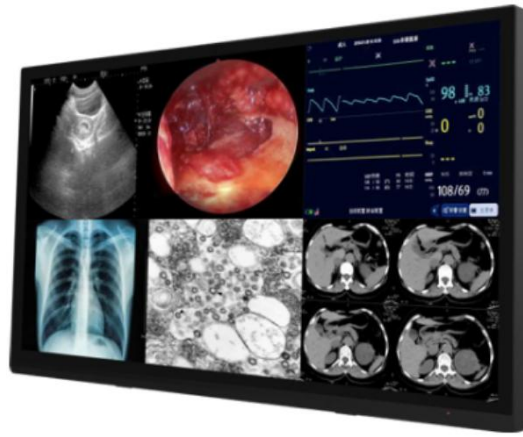


TDD-OFTM-BF215M

21.5" **Medical** Bezel-free (Rear Mount) Open Frame PCAP Touch Monitors



Overview

The **TDD Touch Monitors** include **Standard, Industrial (Open Frame Bezel-free | Rear Mount, Panel Mount, Closed Frame), Outdoor, Waterproof, Stainless Steel, Marine, Curved, Desktop POS, Commercial Displays, Medical and Custom** types, delivers an industrial, reliable and cost-effective solution with outstanding image clarity & accurate touch response for OEMs & systems integrators. 7-98" sizes with rugged bezel, flat structure, high durability and versatility for Kiosks applications from Self-service, Automated Parking, Industrial Automation, Outdoor Control, Healthcare to Gaming.

Features

- **DICOM Medical Grade** Touchscreen Monitors, Easy to Clean, Enhancing Clinical Workflow with Touch
- Embedded design with **Steel / Aluminum Frame / Back**
- IP65 (front) for water and dust protection, flexible mounting in any table, kiosk, or cabinet design

Specifications

Panel

Diagonal Size	21.5"(16:9), 55cm, Active matrix TFT LCD (LED)
Active Area (mm)	478 mm x 269.6 mm
Resolution	1920 x 1080
Viewing Angle	Horizontal: 89° or 178° total / Vertical: 89° or 178° total
Number of Colors	16.7 million
Brightness (typical)	250 nits
Response Time-total	17 (Typ.)(G to G) ms
Contrast Ratio	1000:1
Input Video Frequency	Horizontal: 30 - 60 KHz / Vertical: 50 - 75 Hz

Touch

Touch Technology	PCAP (Projected Capacitive) - 10 Touch Capacity
Surface Treatment	Water, Dust & Vandal proof; Optional: Anti-glare, Anti-fingerprint, Anti-smudge, Anti-bacterial
Supported OS	Windows / Android / Linux / Mac

Interfaces / Connectors / Controls

Video Interfaces	VGA x1 / HDMI x1 / DVI x1 (opt.) / Display Port x1 (opt.) / USB x1 for Touch; HDCP: Yes
Connectors & Controls	Audio Mini jack x1 / DC x1; 5 OSD buttons

Power

Supply / Consumption: 100-240 VAC / 12VDC +/- 5%; 25W typical, 1.5W sleep, 0.5W off

Mechanical

Product Dimensions: 533.5 x 320.5 x 51.5mm / Weight (Unpacked / Packed): 5.15 / 6.65 kg
Box Dimensions: 630 x 431 x 141mm / VESA Mounting: 100 x 100 / 200 x 100mm

Environmental

Operating / Storage Temperature: -10°C to 60°C / -20°C to 60°C

Accessories

Power adapter / cable, HDMI / VGA / Touch USB cable, flush mount brackets w/screws (opt.)

Others

MTBF / Warranty / Enclosure Color: 50,000 hours demonstrated / 1-year / black | white, silver
Ready for Use: 24/7

* TDD (www.tddtouch.com, sales@tddtouch.com) reserves the right to change specifications without prior notice.